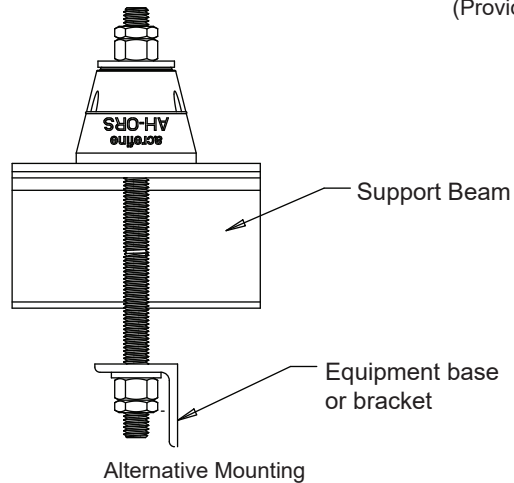


Max. M12 or 1/2" Rods,  
Nuts and Washers  
(Provided by others)

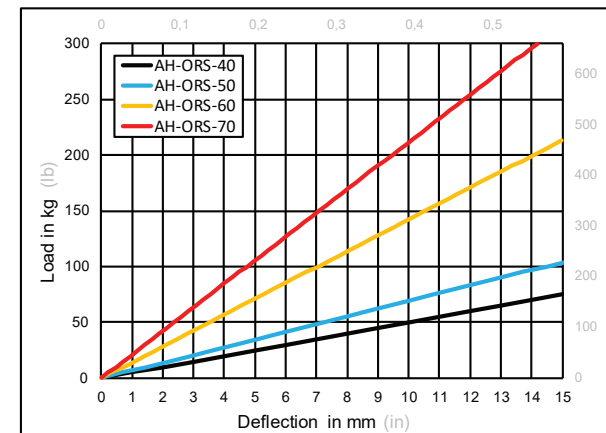


#### NOTES:

1. Specified Load Capacity is the max. allowable load for a single isolator and this value must not be exceeded.
2. Isolator must be installed per Installation Instruction 9180.




REV	DESCRIPTION	DATE	MADE BY	APP'L
3	VI curves, properties added.	15.10.2020	BK	AY



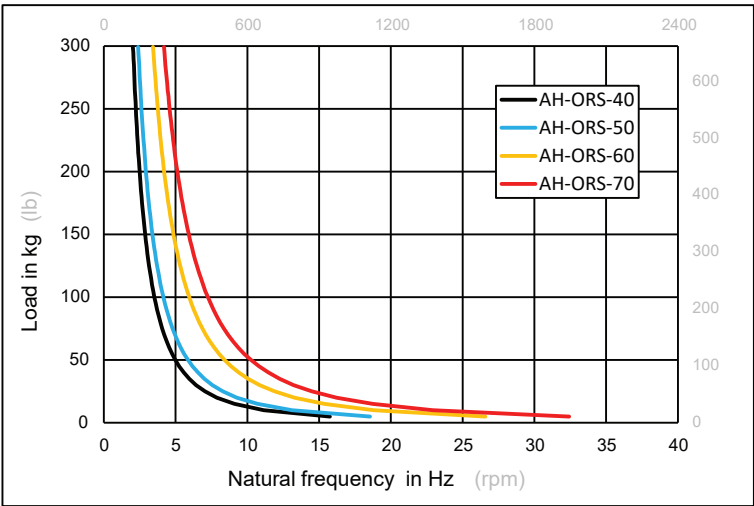
#### ISOLATOR PROPERTIES

ISOLATOR TYPE	Colour Mark	Shore A Hardness	Load Capacity (kg)	Load Capacity (lb)	Max. Deflection (mm)	Max. Deflection (in)
AH-ORS-40	No Mark	40	65	143	13	0.51
AH-ORS-50	Blue	50	90	198	13	0.51
AH-ORS-60	Yellow	60	185	408	13	0.51
AH-ORS-70	Red	70	275	606	13	0.51

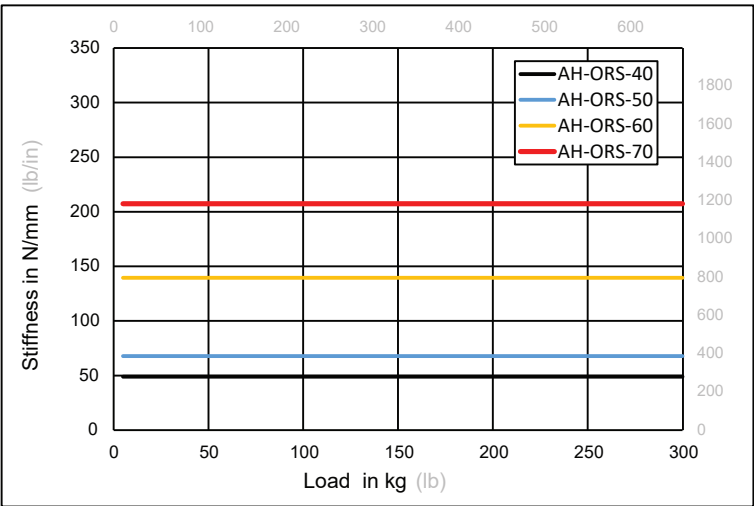
<div>POD</div> <div>PERFORMANCE OUTLINE DRAWING</div>		AH-ORS Type Open Rubber Hanger		<div>ACREFINE® FIXING &amp; SEISMIC</div>		
PROJECT INFORMATION	CUSTOMER		PROJECT NAME	DRAWING No.	8275	REV
	ENGINEER			DRAWING BY	MMD	3
	DATE		LOCATION	DATE	15.10.2020	
	PROJECT No.			SCALE	NTS	Page2/2

# Vibration Isolation and Noise Control Properties of AH-ORS Type Rubber Hanger


NATURAL FREQUENCY CURVES



STIFFNESS PROPERTIES



**Disclaimer:** The Information provided in these technical documents constitute a summary related to the product itself and not the intended application. We do recommend that you seek further advice regarding actual field application from our engineers or authorised partners. Latest version of this document is available to download from [www.acrefine.com](http://www.acrefine.com).

<div>POD</div> <div>PERFORMANCE OUTLINE DRAWING</div>			AH-ORS Type Open Rubber Hanger		<div>ACREFINE® FIXING &amp; SEISMIC</div>		
PROJECT INFORMATION	CUSTOMER		PROJECT NAME		DRAWING No.	8275	REV
	ENGINEER				DRAWING BY	MMD	3
	DATE		LOCATION		DATE	15.10.2020	
	PROJECT No.				SCALE	NTS	